

The background of the upper half of the page features several overlapping, translucent blue wavy lines that flow from the left side towards the right, creating a sense of movement and depth.

O^{••}XY CHENY

For Health, For New Life

Product Catalogue

The bottom of the page is a solid, dark blue horizontal bar that spans the entire width of the document, serving as a footer or base for the design.



Company introduction

10+

Experienced



after-sale protection



Cheny Beauty Technology (shenzhen) Co., Ltd.

Company Profiles

Cheny Beauty Technology (shenzhen) Co., Ltd. was founded in 2015 located in Shenzhen with a long cultural history and beautiful scenery. It is a research and development, production, sales, service in one of the professional health equipment high-tech enterprises. Adhering to the concept of "innovation changes life", the company is committed to the application of various high-tech research and development, production domestic the leading health instrument provides continuity for modern people's continuous pursuit of young, beautiful and healthy lifestyle help. We pursue the "self-reliance, unity and hard work, pioneering and innovative" spirit of enterprise, through continuous exploration and unremitting efforts, has achieved remarkable brilliant results, the scale of the company has been comprehensive development, including room type hard body hyperbaric oxygen chamber series, portable soft hyperbaric oxygen chamber series.

Production Management

In production management, the company strictly follows modern enterprises the management mode of the industry, vigorously introduce foreign advanced equipment and production technology, so that the products have been recognized by the European Community CE Certificate, Australian MEPS and other authoritative certification. Excellent quality, unique performance and remarkable results successfully entered the international market; In the United States, Russia, Britain, Australia, New Zealand and other European and American countries and South Korea, India, Malay West Asia, Thailand and Southeast Asia have a good reputation.

Company Philosophy

Cheny Beauty Technology (shenzhen) Co., Ltd. after nearly 10 years, adhering to the "quality first, service first" purpose, public the company's products from research and development to production, and then to shipment, including the selection and evaluation of suppliers, each link is strictly controlled the quality of the products, since its establishment, every employee of NianSheng has strictly followed the "quality first" working attitude, more than 10 years has never been interrupted. "To provide customers with the most satisfactory service" is the company's eternal commitment to customers!



Design



R&D



Produce



Sell



Cheny Beauty Technology (shenzhen) Co., Ltd.

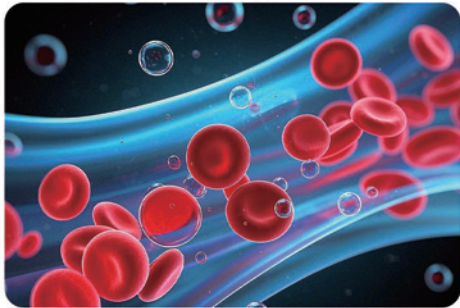


Sold to 60+ countries and regions

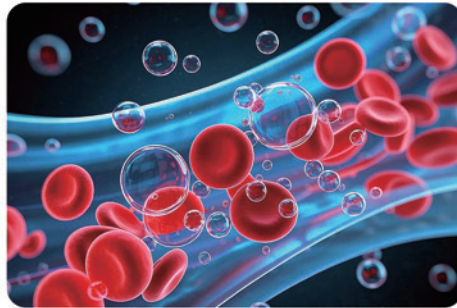
Rich shipping experience ensures that your goods arrive safely.

How does the hyperbaric oxygen chamber work?

The core principle of hyperbaric oxygen chamber is to significantly increase the concentration and partial pressure of oxygen inhaled by patients by increasing the ambient pressure. Under high pressure, oxygen solubility in the blood increases and can be more efficiently transported to tissues throughout the body, especially in hypoxic areas.



1.0ATA



≥1.3ATA



Increase the partial pressure of oxygen in the body.

The hyperbaric chamber can be raised to 30kpa.



Increase blood oxygen saturation.

Oxygen intake is equivalent to more than 2 times that of normal breathing.



Increase the oxygen diffusion distance in the body.

Use the flow of lymph to increase blood flow.

This high concentration of oxygen can:

1. Promote cell metabolism: increase oxygen supply in cells, promote cell regeneration and division, accelerate tissue repair.
2. Inhibition of bacterial growth: High concentrations of oxygen inhibit certain anaerobic bacteria, reducing the risk of infection.
3. Improve blood circulation: increase the solubility of oxygen in the blood, improve microcirculation, increase oxygen supply to important organs.
4. Reduce inflammation: Reduce tissue swelling and pain by reducing the release of inflammatory factors.
5. Promote wound healing: accelerate platelet aggregation and coagulation, promote neovascularization, accelerate wound healing.

Seven functions



Applicable scene



Beauty center



Home



Fitness center



Hospital



Rehabilitation centre



Old people's home



Resort center



Oxygen therapy center



Other special mechanism

Applicable group



Brain worker
Relieve fatigue



Mountaineer
Relieve altitude sickness



Student
Improve memory



The aged
Maintain good health



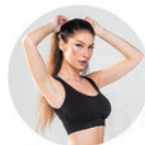
Rehabilitation patient
Aid physical rehabilitation



Drinking crowd
Dispel the effects of alcohol



Athletes
Relieve exercise fatigue



Model
Management figure



More...
Suitable for most people

Oxygen Concentrator

Pressure-boosting and oxygen-generating combined unit



Specification

10L



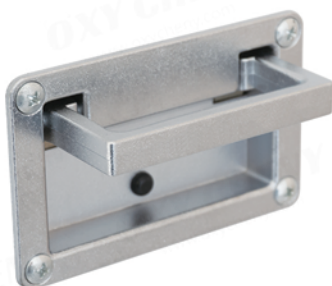
Parameters

Product specification	10L
Rated power	≈850W
Use voltage/frequency	110V 60Hz / 220V 50Hz
Rapid charging flow(at lata ambient pressure)	≈200L/min
Oxygen flow rate (pure Oxygen mode)	≥10L/min
Oxygen concentration(Pure oxygen mode)	≥93%(v/v)±3
Noise	About 55 decibels
Net oxygen source weight	≈56kg
Product appearance size	L 420mm * W 400mm * H 768mm



Specification

15L



Parameters

Product specification	15L
Rated power	≈1100W
Use voltage/frequency	110V 60Hz / 220V 50Hz
Rapid charging flow(at lata ambient pressure)	≈220L/min
Oxygen flow rate (pure Oxygen mode)	≥15L/min
Oxygen concentration(Pure oxygen mode)	≥93%(v/v)±3
Noise	About 55 decibels
Net oxygen source weight	≈86kg
Product appearance size	590mm * 650mm * 1180mm

Lying Style hyperbaric oxygen hard chamber

OXY-CY1



**2.0 ATA
(9psi)**

**Ultra quiet
exhaust valve**

**Intercom
system**



Parameters

Chamber	Pressure	2.0ATA/100kPa (Adjustable)
	Size	Ø 900mm*2200mm
	Weight	450kg
	Hull material	Aluminum alloy
	Cabin door	PC Endurance Board
	Safety facilities	Manual safety valve & Automatic safety valve
	Conversational system	Telephone/Bluetooth intercom
Oxygen concentrator	Product specification	15L



Manual pressure relief valve to ensure safety.



Pressure gage, Real-time pressure display.



Outside intelligent system and telephone.



Inside intelligent system and telephone.



Large area window Good light, reduce claustrophobia.



Wide handrail design for easy access to the cabin.



Automatic pressure relief valves provide full protection.



Pipe interface on the oxygen concentrator.

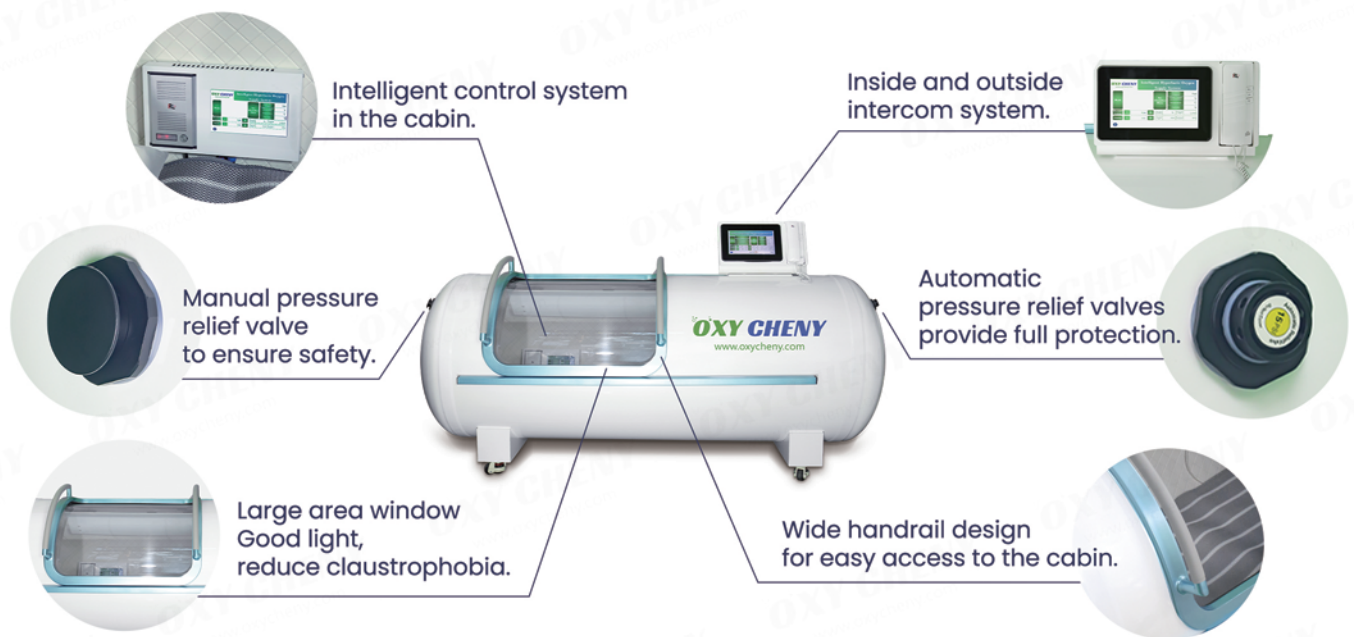
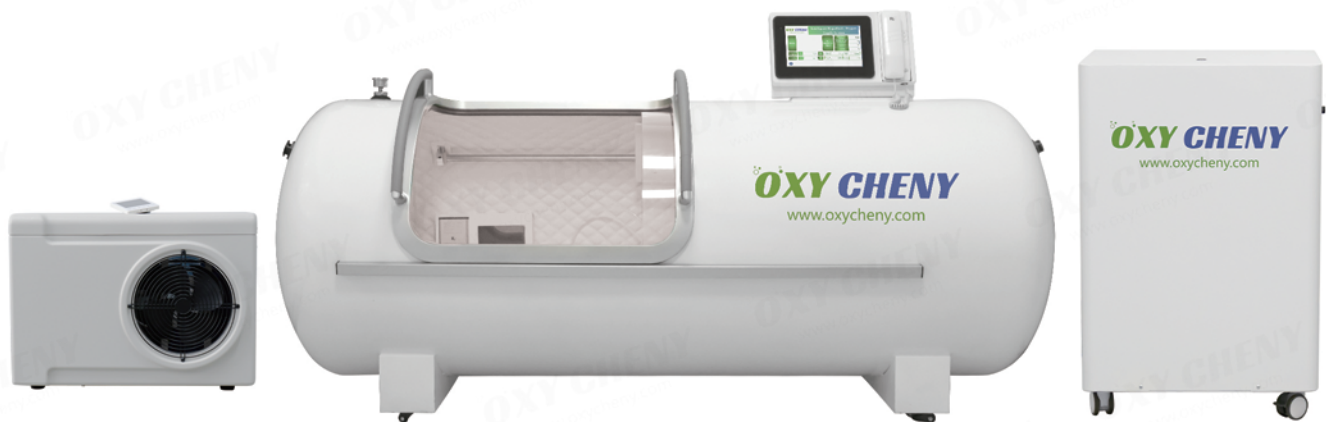


Pipe interface on the chamber.

Internal environment



Lying Style hyperbaric oxygen hard chamber T5B



Parameters		
Chamber	Pressure	2.0ATA/100kPa (Adjustable)
	Size	Ø 800mm*2200mm
	Weight	450kg
	Hull material	Carbon steel
	Cabin door	PC Endurance Board
	Safety facilities	Manual safety valve & Automatic safety valve
	Conversational system	Telephone/Bluetooth intercom
Oxygen concentrator	Product specification	15L



Water-cooled air conditioner



Low voltage DC module



Air conditioner remote control



Power switch

Parameters

Air conditioner	Use voltage/frequency	220V / 50Hz
	Refrigerant/charge quantity	R410A/260g
	Rated power	660W

Mini Single Person Oxygen Chamber

OXY-CY3

- 1.3/ **1.5** ATA working pressure
- Push-pull inlet door, pressure seal, door opening and lowering system
- Two way communication intercom system
- Automatic pneumatic control system
- Easy installation and operation
- Provides 93% oxygen under pressure through oxygen earphones/masks
- Ultra quiet exhaust valve



Internal environment



Configuration

Standard configuration	A fixed sofa	Illumination
	Interior decoration	Wireless intercom
	Carpet	Water cooled air conditioning

Parameters

Chamber	Pressure	1.5ATA/50kPa (Adjustable)
	Size	L 1400mm * W 800mm * H 1830mm
	Weight	450kg
	Hull material	Carbon steel QB355
	Cabin door	Carbon steel / PC Endurance Board
	Safety facilities	Manual safety valve, Automatic safety valve, Emergency Button
	Conversational system	Telephone/Bluetooth intercom
Oxygen concentrator	Product specification	10L



Manual pressure relief valve



Humidification bottle



Automatic pressure relief valve

2.0ATA Chamber



Comfortable Single Person Oxygen Chamber

OXY-CY5

• **1.5** ATA working pressure

- Push-pull inlet door, pressure seal, door opening and lowering system
- Two way communication intercom system
- Automatic pneumatic control system
- Easy installation and operation
- Provides 93% oxygen under pressure through oxygen earphones/masks
- Ultra quiet exhaust valve



Bluetooth intercom



Telephone

Configuration		
Standard configuration	Electric recliner	Illumination
	Interior decoration	Wireless intercom
	Carpet	Water cooled air conditioning
Optional configuration	TV (Optional)	

Parameters		
Chamber	Pressure	1.5ATA/50kPa (Adjustable)
	Size	L 1800mm * W 1000mm * H 1900mm
	Weight	650kg
	Hull material	Carbon steel QB355
	Cabin door	Carbon steel / PC Endurance Board
	Safety facilities	Manual safety valve, Automatic safety valve, Emergency Button
	Conversational system	Telephone/Bluetooth intercom
Oxygen concentrator	Product specification	10L



Electric recliner



Sofa controller



Air conditioner vent



Ear-hook Oxygen Inhaler



Manual pressure relief valve



Automatic pressure relief valve

2.0ATA Chamber



Size :	L 1800mm * W 1000mm * H 1750mm
Weight :	1000kg
Cabin door :	Carbon steel

Luxurious Single Person Oxygen Chamber

OXY-CY6

- **1.5** ATA working pressure
- Push-pull inlet door, pressure seal, door opening and lowering system
- Two way communication intercom system
- Automatic pneumatic control system
- Easy installation and operation
- Provides 93% oxygen under pressure through oxygen earphones/masks
- Ultra quiet exhaust valve



Bluetooth intercom



Telephone

Configuration		
Standard configuration	Electric recliner	Illumination
	Interior decoration	Wireless intercom
	Carpet	Water cooled air conditioning
Optional configuration	TV (Optional)	

Parameters		
Chamber	Pressure	1.5ATA/50kPa (Adjustable)
	Size	L 2000mm * W 1250mm * H 1900mm
	Weight	1000kg
	Hull material	Carbon steel QB355
	Cabin door	Carbon steel / PC Endurance Board
	Safety facilities	Manual safety valve, Automatic safety valve, Emergency Button
	Conversational system	Telephone / Bluetooth intercom
Oxygen concentrator	Product specification	10L



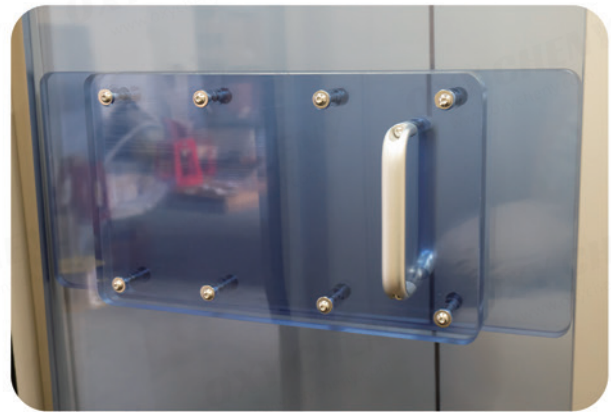
TV



Air conditioner vent



Electric recliner



Door



Pressure gauge



Manual pressure relief valve



Observation window

2.0ATA Chamber

Size :	L 1800mm * W 1000mm * H 1750mm
Weight :	1200kg
Cabin door :	Carbon steel



Luxurious Two Person Oxygen Chamber

OXY-CY7

• **1.5** ATA working pressure

- Push-pull inlet door, pressure seal, door opening and lowering system
- Two way communication intercom system
- Automatic pneumatic control system
- Easy installation and operation
- Provides 93% oxygen under pressure through oxygen earphones/masks
- Ultra quiet exhaust valve



Shelf



Oxygen mask

Configuration		
Standard configuration	Electric recliner	Illumination
	Interior decoration	Wireless intercom
	Carpet	Water cooled air conditioning
Optional configuration	TV (Optional)	

Parameters		
Chamber	Pressure	1.5ATA/50kPa (Adjustable)
	Size	L 2000mm *1800mm * H 1900mm
	Weight	1200kg
	Hull material	Carbon steel QB355
	Cabin door	Carbon steel / PC Endurance Board
	Safety facilities	Manual safety valve, Automatic safety valve, Emergency Button
	Conversational system	Telephone/Bluetooth intercom
Oxygen concentrator	Product specification	10L

Internal environment



2.0ATA Chamber

Size :	L 1800mm * W 1600mm * H 1700mm
Weight :	1400kg
Cabin door :	Carbon steel



Single Person Oxygen Chamber

OXY-CY10

• 2.0 ATA working pressure

- Push-pull inlet door, pressure seal, door opening and lowering system
- Two way communication intercom system
- Automatic pneumatic control system
- Easy installation and operation
- Provides 93% oxygen under pressure through oxygen earphones/masks
- Ultra quiet exhaust valve



Configuration

Standard configuration	A fixed sofa	Illumination
	Interior decoration	Wireless intercom
	Carpet	Water cooled air conditioning

Parameters

Chamber	Pressure	2.0ATA/100kPa (Adjustable)
	Size	L 2000mm * W 980mm * H 1700mm
	Weight	350kg
	Hull material	Carbon steel QB355
	Cabin door	PC Board
	Safety facilities	Manual safety valve, Automatic safety valve, Emergency Button
	Conversational system	Telephone / Bluetooth intercom
Oxygen concentrator	Product specification	15L



Single sofa

Observation window



Observation window



Nasal oxygen tube interface

Inside screen

Nasal oxygen tube

Manual pressure relief valve

Air conditioner remote control



Multiplace Hyperbaric Oxygen Therapy Chamber

OXY-CY15



Internal environment

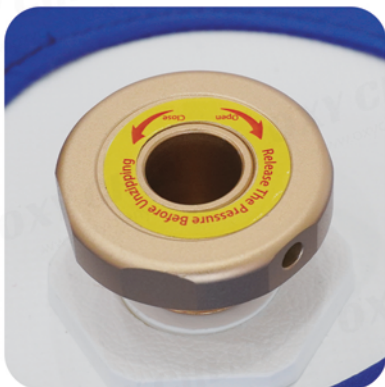


Customized Color Design for HBOT Garments



Sitting Soft Shell Oxygen Chamber

OXY-CY8



Manual pressure relief valve



Pressure gauge



Pipe interface

Configuration

Standard configuration	Cabin	Cabin cloth
	Oxygen concentrator	Positioning sponge
	Air cooler	Interior frame

Parameters

Chamber	Pressure	1.5ATA/50kPa (Adjustable)
	Size	Ø850mm * 2100mm
	Weight	25kg
	Hull material	Medical grade TPU
	Safety facilities	Manual safety valve, Automatic safety valve, Emergency Button
	Zipper	Japanese zippers (YKK)
Oxygen concentrator	Product specification	10L

Lying Soft Shell Oxygen Chamber

OXY-CY8A

2.0ATA Chamber



Observation window



Pressure gauge



Zipper



Strap



Manual pressure relief valve



Automatic pressure relief valve

Lying Soft Shell Oxygen Chamber

OXY-CY8B



Inside screen

Zipper

manual pressure
relieve value

Observation
window



Storage pockets

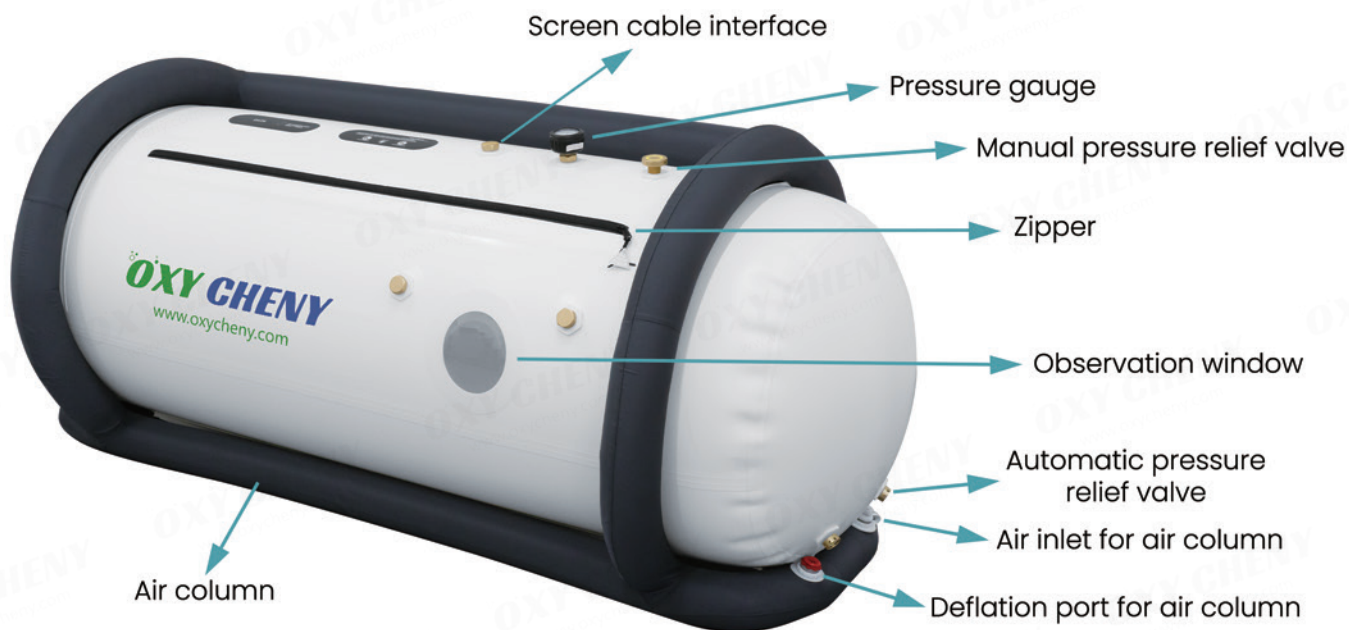
Sound-absorbing
cotton

Oxygen mask

Emergency
stop button

Parameters

Chamber	Pressure	1.5ATA/50kPa (Adjustable)
	Size	Ø800mm * 2000mm
	Weight	40kg
	Hull material	Medical grade TPU
	Safety facilities	Manual safety valve, Automatic safety valve, Emergency Button
	Zipper	Japanese zippers (YKK)
Oxygen concentrator	Product specification	10L



Air cooler



Parameters

Air cooler	Use voltage/frequency	110V 60Hz / 220V 50Hz
	Capability	280L/Minute
	Rated power	250W

Sitting Soft Shell Oxygen Chamber

OXY-CY9



- 1.3/ 1.5 ATA working pressure
- 4 large transparent observation windows to prevent claustrophobia
- Emergency valve - accelerated decompression in case of emergency
- Provides 96% oxygen under pressure through oxygen earphones/masks
- external pressure gauge - can observe the pressure when using
- external metal frame - maintains shape when deflating



Parameters

Chamber	Pressure	1.5ATA/50kPa (Adjustable)
	Size	L 1600mm * W 650mm * H 1200mm
	Weight	34kg
	Hull material	Medical grade TPU
	Safety facilities	Manual safety valve, Automatic safety valve, Emergency Button
	Zipper	Japanese zippers (YKK)
Oxygen concentrator	Product specification	10L

Sitting&Lying Soft Shell Oxygen Chamber

OXY-CY12



- 1.3/ 1.5 ATA working pressure.
- 2 zipper closures for easier opening and entry.
- The most popular models for home therapy or commercial use.
- Provides 96% oxygen under pressure through oxygen earphones/masks.
- external pressure gauge -can observe the pressure when using.



Pull ring



Backup interface



Pipe interface



Manual pressure relief valve



Automatic pressure relief valve



Pressure gauge

Parameters

Chamber	Pressure	1.5ATA/50kPa (Adjustable)
	Size	L 2200mm * W 700mm * H 1100mm
	Weight	45kg
	Hull material	Medical grade TPU
	Safety facilities	Manual safety valve, Automatic safety valve, Emergency Button
	Zipper	Japanese zippers (YKK)
Oxygen concentrator	Product specification	10L

Customized Color Design for HBOT Garments

Embark on a Customization Journey

We offer a variety of color schemes to perfectly integrate your hyperbaric oxygen chamber with your space. Whether it's a hospital, rehabilitation center, or a private club, our options will reflect the unique style of your company.



For more detailed information, please contact us...

Customized patterns

a Unique Healing Experience!

Transform your hyperbaric oxygen chamber into a unique medical space with custom-printed patterns. Choose from modern designs or warm, comforting styles to match your brand or patient needs. Our advanced printing ensures clarity and durability.



For more customization options, contact us...



OXY CHENY



www.oxycheny.com

Cheny Beauty Technology (shenzhen) Co., Ltd

Address: Room 201-203 Building B No. 2801 Huangpu East Rd. Guangzhou China